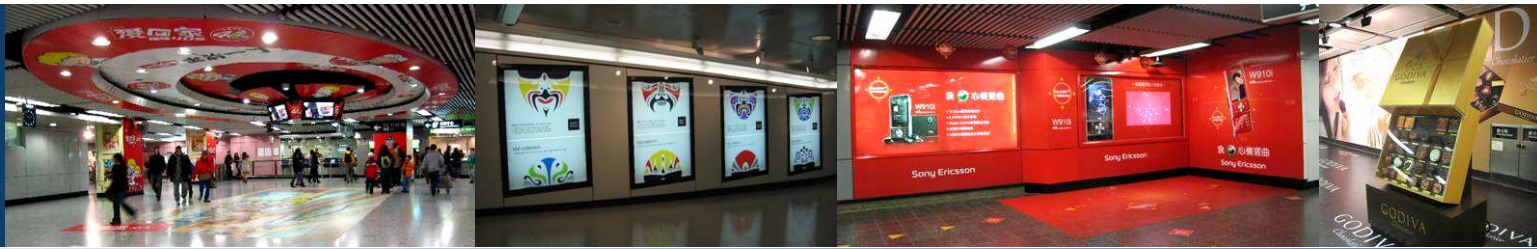


MTR Advertising Outstanding Campaign

(*MTR System including Island Line, Tsuen Wan Line, Kwun Tong Line,
Tung Chung Line, Tseung Kwan O Line and Disneyland Resort Line)

Mar, 2009



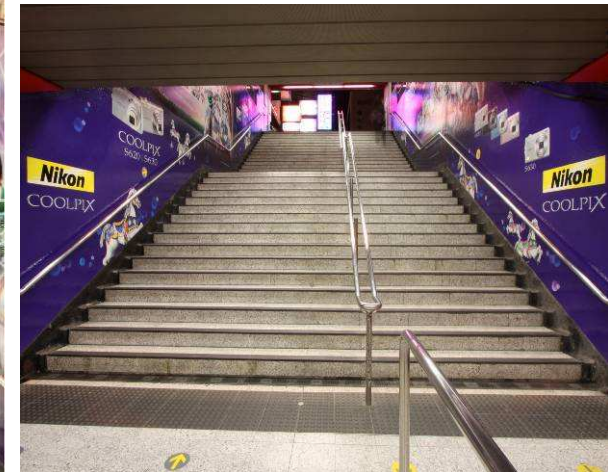
HK MTR: Hong Kong Jockey Club



Brand: Hong Kong Jockey Club
Format: 12-sheet Panel Extension, Poster On Wall, Floor Vision and 3D Display
Location: Central
Campaign Period: 5 – 22 Mar 2009



Brand: Adidas HK Ltd
Format: Poster On Wall
Location: Causeway Bay
Campaign Period: 11 - 31 Mar 2009



Brand: Nikon HK Ltd
Format: Poster On Wall and Solus Wall
Location: Mong Kok
Campaign Period: 11 – 31 Mar 2009



Brand: Estee Lauder (HK) Ltd - Clinique
Format: Digital Escalator Crown Bank with Poster Extension
Location: TSim Sha Tsui
Campaign Period: 12 Mar – 8 Apr 2009

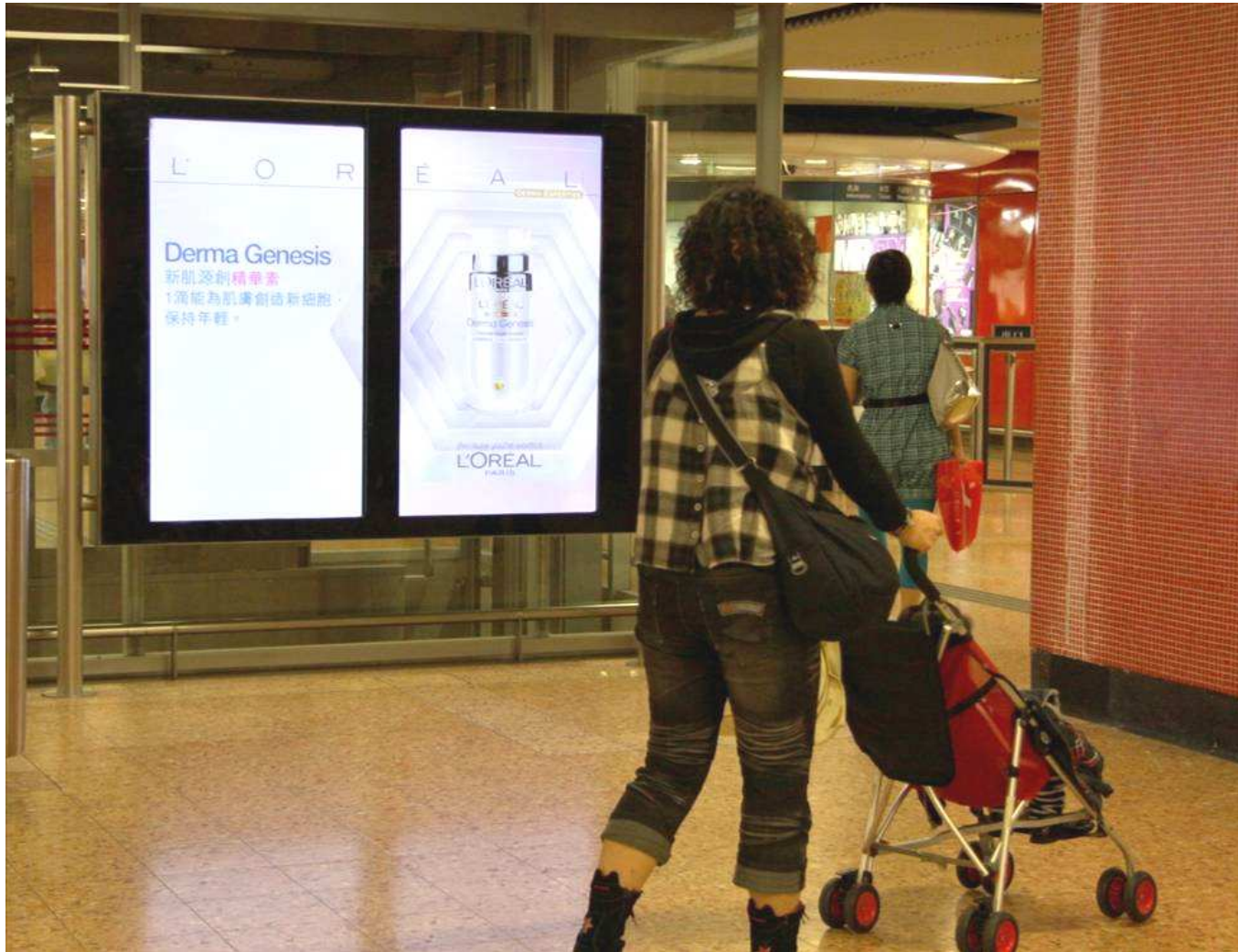
HK MTR: Package Tour



Brand: Package Tour
Format: Digital Panel Network
Location: Central, Admiralty, Wan Chai, Tai Koo, Tsim Sha Tsui and Mong Kok
Campaign Period: 17 - 31 Mar 2009



Brand: Panasonic
Format: Digital Panel Network
Location: Central, Admiralty, Wan Chai, Tai Koo, Tsim Sha Tsui and Mong Kok
Campaign Period: 17 - 31 Mar 2009



Brand: L'Oreal
Format: Digital Panel Network
Location: Central, Admiralty, Wan Chai, Tai Koo, Tsim Sha Tsui and Mong Kok
Campaign Period: 17 - 31 Mar 2009



Brand: UPS
Format: Digital Panel Network
Location: Central, Admiralty, Wan Chai, Tai Koo, Tsim Sha Tsui and Mong Kok
Campaign Period: 17 Mar – 13 Apr 2009